

Report No.: MP89-084
Date : November 10, 1989
Page : 1 of 3

DUAL MOMENT LOAD TEST
ON
DURAFRONT DOOR CORNER SPECIMENS

TESTED FOR: **United States Aluminum Corp.**
767 Monterey Pass Road
Monterey Park, Calif. 91754

TESTED BY: **Fenestration Testing Laboratory**
1949 S. San Antonio Avenue
Ontario, Calif. 91762

1.0 Description of Test Specimen

- 1.1 United States Aluminum Corporation submitted three (3) door corner assemblies, each consisting of two extruded aluminum pieces $3\frac{1}{2}$ " x $1\frac{7}{8}$ " x 24" long and $7\frac{1}{2}$ " x $1\frac{7}{8}$ " x 12" long. (See Fig.I)

Each corner assembly was mechanically connected at the inside and outside corners. The outside corner of each assembly was also welded.

2.0 Test Procedure

- 2.1 The 12" leg of each corner assembly was secured to the stationary portion of the test stand with inside edge of 24" leg three inches from the edge of the stand.
- 2.2 The second moment arm was then secured fifteen inches from the inside edge of the 12" member and the load applied nineteen inches from the inside edge of the 24" member (See Fig.II)
- 2.3 The second moment arm was loaded until the free end of the 24" member would vertically rise to form the designated angle of 1 , 2 , and 3 degrees.

At the designated angle, the load applied and the measurement of the gap at points "A" and "B" were recorded. The load was then relaxed and the measurement of the gap at points "A" and "B" were recorded.

3.0 Test Data of Dual Moment Test

Specimen	Load (lbs)	Gap (in) Loaded		Gap (in) Unloaded		Designated Angle of Rise in Degrees
		"A"	"B"	"A"	"B"	
2	150	.032	.020	0	0	1
2	250	.117	.100	.042	.050	2
2	300					weld broke
3	280	.068	.047	.026	.029	1
3	380					weld broke
4	260	.053	.035	.020	.019	1
4	400					weld broke

Note: Prior to each test the gap at "A" and "B" were recorded at 0.00 inches.

Pete Cruz
 PETE CRUZ
 TEST ENGINEER

Francis Pickell
 FRANCIS PICKELL, S.E.
 REGISTERED PROFESSIONAL ENGINEER
 STATE OF CALIFORNIA

(NOT TO SCALE)

FIGURE 1

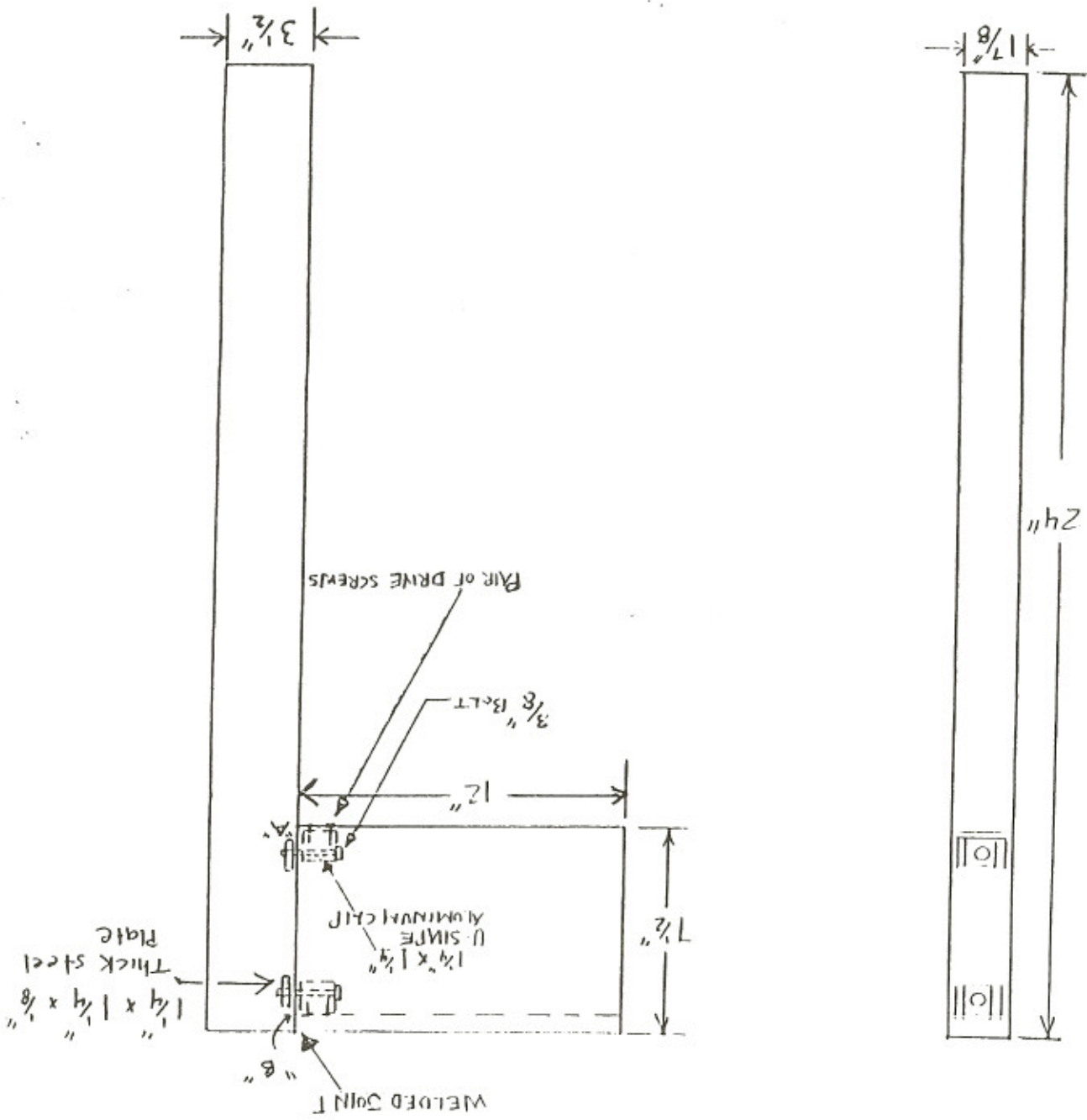


FIGURE 2

