

Complete Installation

Step 6: If using 1/4" (6 mm) thick glass in Shelf Kit designed for 1/4" and 5/16" (6 and 8 mm)

glass, remove release liner from Rigid PVC Spacer and install under top lip of Extrusion.

Step 7: Install Silicone Cushion into Lower Front Edge of Extrusion.

Step 8: Insert matching finish End Caps into each end of Extrusion.

Step 9: Clean and install tempered glass shelf into extrusion slot.



Guidelines for Glass Size and Weight Capacity:

Glass Size

Maximum depth of shelf must not exceed 12" (304.8 mm). It is recommended that the glass shelf not extend more than 6" (152.4 mm) beyond either end of the Shelf Extrusion.

Weight Capacity

1/4" (6 mm) Shelf Kits: Weight must not exceed 13 pounds (5.9 kg) per linear foot.

3/8" (10 mm) Shelf Kits: Weight must not exceed 18 pounds (8.1 kg) per linear foot.

CRL Aluminum Shelving Extrusions Installation Instructions

CRL 18" (457 mm), 24" (610 mm), and 36" (914 mm)

Shelf Kits contain the following parts:

Shelf Kits for 1/4" and 5/16" (6 and 8 mm) Thick Glass

- (1) length of Shelf Extrusion
- (1) pair of matching finish End Caps
- (1) length of Silicone Cushion
- (1) length of PVC Spacer with Adhesive [only used for 1/4" (6 mm) glass]

Shelf Kits for 3/8" (10 mm) Thick Glass

- (1) length of Shelf Extrusion
- (1) pair of matching finish End Caps
- (1) length of Silicone Cushion

96" (2.4 m) lengths of Shelf Extrusion

come with the following:

Extrusions for 1/4" and 5/16" (6 and 8 mm) Thick Glass

- (1) length of Silicone Cushion
- (1) length of PVC Spacer

Extrusions for 3/8" (10 mm) Thick Glass

- (1) length of Silicone Cushion

NOTE: End Caps for 96" (2.4 m) lengths must be ordered separately.

IMPORTANT - CRL recommends only tempered glass be used with Shelf Extrusions

Tools needed for installation:

- Tape Measure
- Electric Drill
- 1/4" (6 mm) Twist Drill Bit
- 1/2" (12 mm) Spade Bit
- Phillips or Flat Head Screwdriver
- Bubble Level
- Pencil
- #8x2-1/2" Flat Head Screws (CRL Cat. No. 8X212FHPSMS)
- 3/16" (4.7 mm) diameter x 3" (76.2 mm) long Toggle Bolts (CRL Cat. No. 70333)

Determine the Location for Installation of Shelf

Step 1: Locate wall stud. Mark the center of the Extrusion over the nearest wall stud.



Drill Center Hole in Extrusion

Step 2: Extrusions have horizontal guidelines indicating where holes should be drilled. Using 1/4" (6 mm) drill bit, drill hole in line with the wall stud closest to the center of Extrusion.



Attach Extrusion to Wall

Step 3: Using #8x2-1/2" Screw, fasten Extrusion loosely through center hole into wall stud. Do not tighten Extrusion against wall; allow for Extrusion to be rotated. Place level on front edge of Extrusion to make certain Extrusion is straight and level. Mark both ends.



Mark and Drill Remaining Holes for Shelf Extrusions

Recommendation for Number of Fasteners and Required Holes:

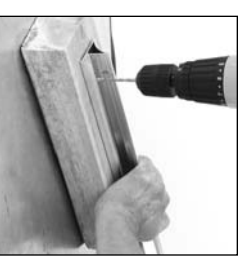
- 18" (457 mm) and 24" (610 mm) Kits -**
 - (1) #8x2-1/2" Screw and
 - (2) 3/16" (4.7 mm) x 3" (76.2 mm) long Toggle Bolts
- 36" (914 mm) Kit -**
 - (3) #8x2-1/2" Screws **or** (2) #8x2-1/2" Screws and
 - (2) 3/16" (4.7 mm) x 3" (76.2 mm) long Toggle Bolts

When Installing Longer Lengths of Shelf Extrusion

#8x2-1/2" Screws should be installed into each wall stud the entire length of the Extrusion to achieve recommended weight capacities. It will take (2) 3/16" (4.7 mm) x 3" (76.2 mm) long Toggle Bolts to equal the holding strength of (1) #8x2-1/2" Screw installed into a wall stud.

NOTE: Fasteners should be spaced evenly but never less than 6" (152.4 mm) apart. Install screws into wall studs whenever possible.

Step 4: Mark location of remaining holes and drill.



Install Remaining Screws and Toggle Bolts

Step 5: Use #8x2-1/2" Screws to the right or left of the center screw whenever studs are available. If there are no wall studs to the right or left of center, Toggle Bolts should be installed in lieu of #8x2-1/2" Screws. Drill 1/2" (12.7 mm) diameter holes into dry wall for installation of toggle Bolts. **NOTE: DO NOT USE WALL ANCHORS.** Tighten fasteners securely, but do not over tighten.