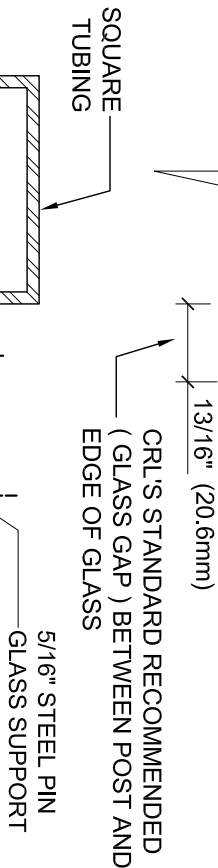
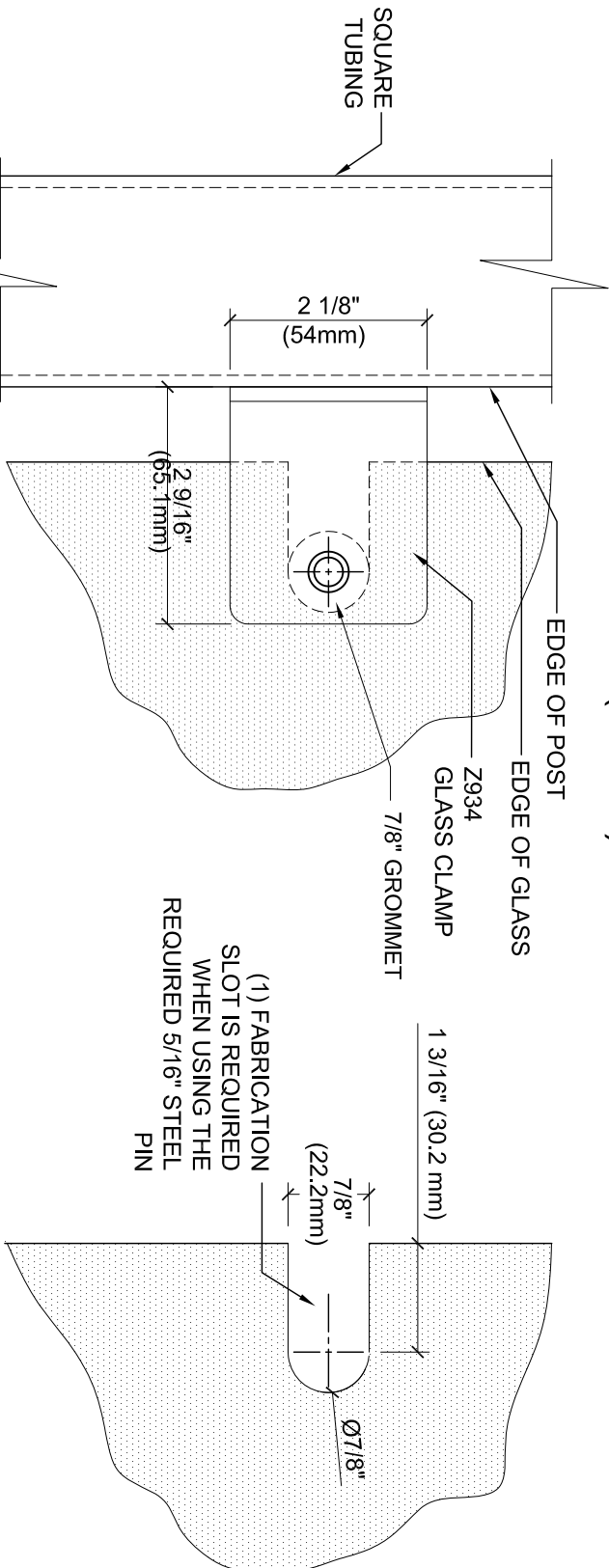


GLASS FABRICATION TEMPLATE FOR THE Z-SERIES SQUARE TYPE FLAT BASE CLAMPS FOR 3/4" (19 mm) GLASS



GLASS FABRICATION
TEMPLATE USED FOR:
CATALOG NUMBER
Z934BS
Z934PS

SPECIFICATIONS:
GLASS THICKNESS: MODELS FOR 3/4" (19 mm) GLASS.
BASE DESIGN: FLAT BACK
FOR USE WITH: SQUARE TUBING OR OTHER FLAT SURFACES.
MATERIAL: 316 STAINLESS STEEL, STAINLESS STEEL, BRUSHED AND POLISHED FINISHES
GLASS FABRICATION: FOR 3/4" (19mm) THICK GLASS, 7/8" (22mm) DIAMETER FINGER SLOT NEEDED FOR USING REQUIRED STEEL PIN FOR GLASS SUPPORT
INCLUDES: RUBBER GASKETS AND STEEL PIN WITH GROMMET.

ALWAYS USE DIMENSIONS SHOWN ON THE PLAN.
DO NOT SCALE OR DIMENSION ACTUAL DRAWING
TO ENSURE ACCURACY



ARCHITECTURAL PRODUCTS
PH: 800-421-6144 FX: 800-262-3299
WWW.CRLAURENCE.COM

DESCRIPTION:
Z-SERIES SQUARE TYPE FLAT BASE GLASS CLAMP
FOR 3/4" (19 mm) THICK GLASS

CAT. NO.: (SEE CHART) DATE: 09/16/11
FILE NAME: Z934-Gls Fab SCALE: N.T.S.
DRAWN BY: R.D. CHECKED BY: C.H. SHT 1 OF 1