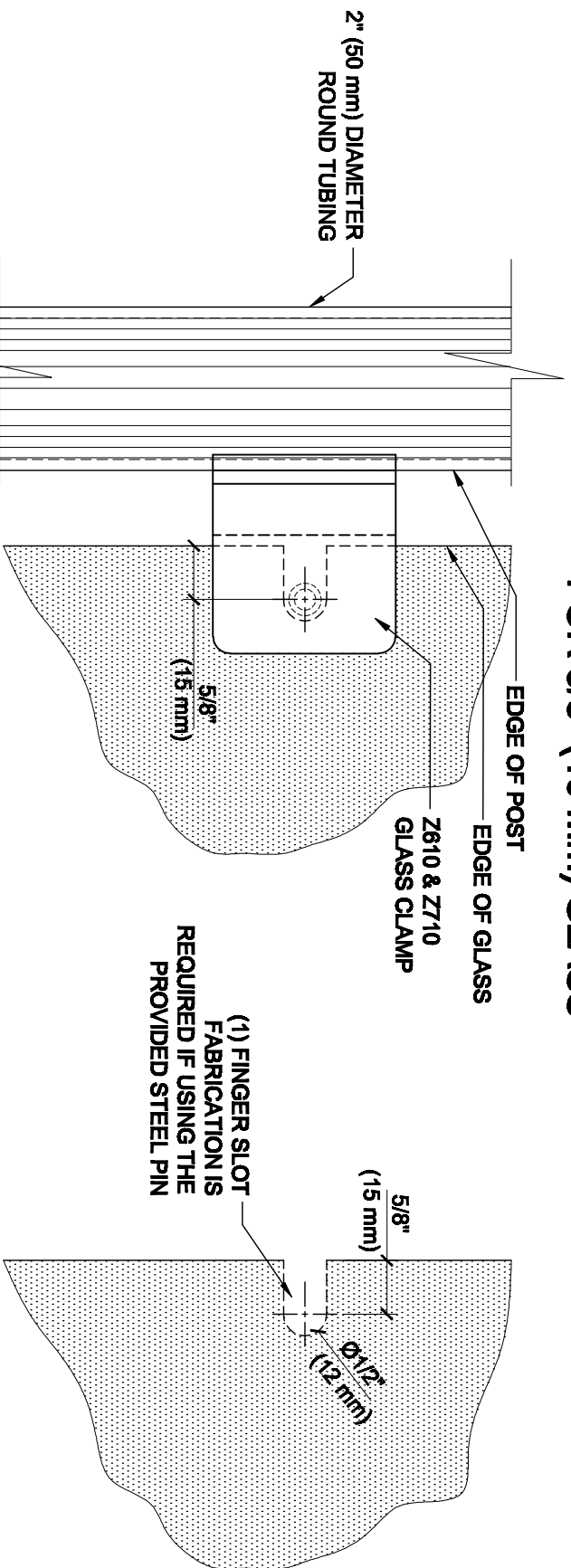


GLASS FABRICATION TEMPLATE FOR THE Z-SERIES SQUARE TYPE RADIUS BASE CLAMPS FOR 3/8" (10 mm) GLASS



2" (50 mm) DIAMETER
ROUND TUBING

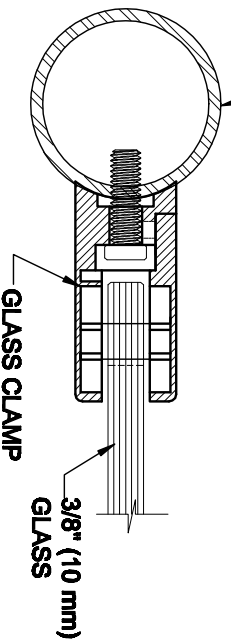
CRL'S STANDARD RECOMMENDED
(GLASS GAP) BETWEEN POST AND
EDGE OF GLASS

(1) FINGER SLOT
FABRICATION IS
REQUIRED IF USING THE
PROVIDED STEEL PIN

ALWAYS USE DIMENSIONS SHOWN ON THE PLAN.
DO NOT SCALE OR DIMENSION ACTUAL DRAWING
TO ENSURE ACCURACY

**GLASS FABRICATION
TEMPLATE USED FOR:**

CATALOG NUMBER	TUBE DIA
Z610BR	2" (50.8 mm) ONLY
Z610CH	2" (50.8 mm) ONLY
Z610SC	2" (50.8 mm) ONLY
Z610BN	2" (50.8 mm) ONLY
Z610GP	2" (50.8 mm) ONLY
Z610W	2" (50.8 mm) ONLY
Z710BS	2" (50.8 mm) ONLY
Z710PS	2" (50.8 mm) ONLY



SPECIFICATIONS:

- GLASS THICKNESS: MODELS FOR 3/8" (10 mm) GLASS.
- BASE DESIGN: RADIUS BACK
- FOR USE WITH: 2" (50.8 mm) DIAMETER ROUND TUBING ONLY.
- MATERIAL: CHOICE OF ZINC CONSTRUCTED OR STAINLESS STEEL, STAINLESS STEEL, OR POWDER PAINTED ZINC CLAMPS ARE RECOMMENDED FOR MORE DURABILITY IN EXTERIOR APPLICATIONS.
- GLASS FABRICATION: FOR 3/8" (10mm), THICK GLASS, 1/2" (12mm) FINGER SLOT REQUIRED IF USING PROVIDED STEEL PIN FOR GLASS SUPPORT
- INCLUDES: RUBBER GASKETS AND STEEL PIN (FOR OPTIONAL USE) WITH GROMMET.