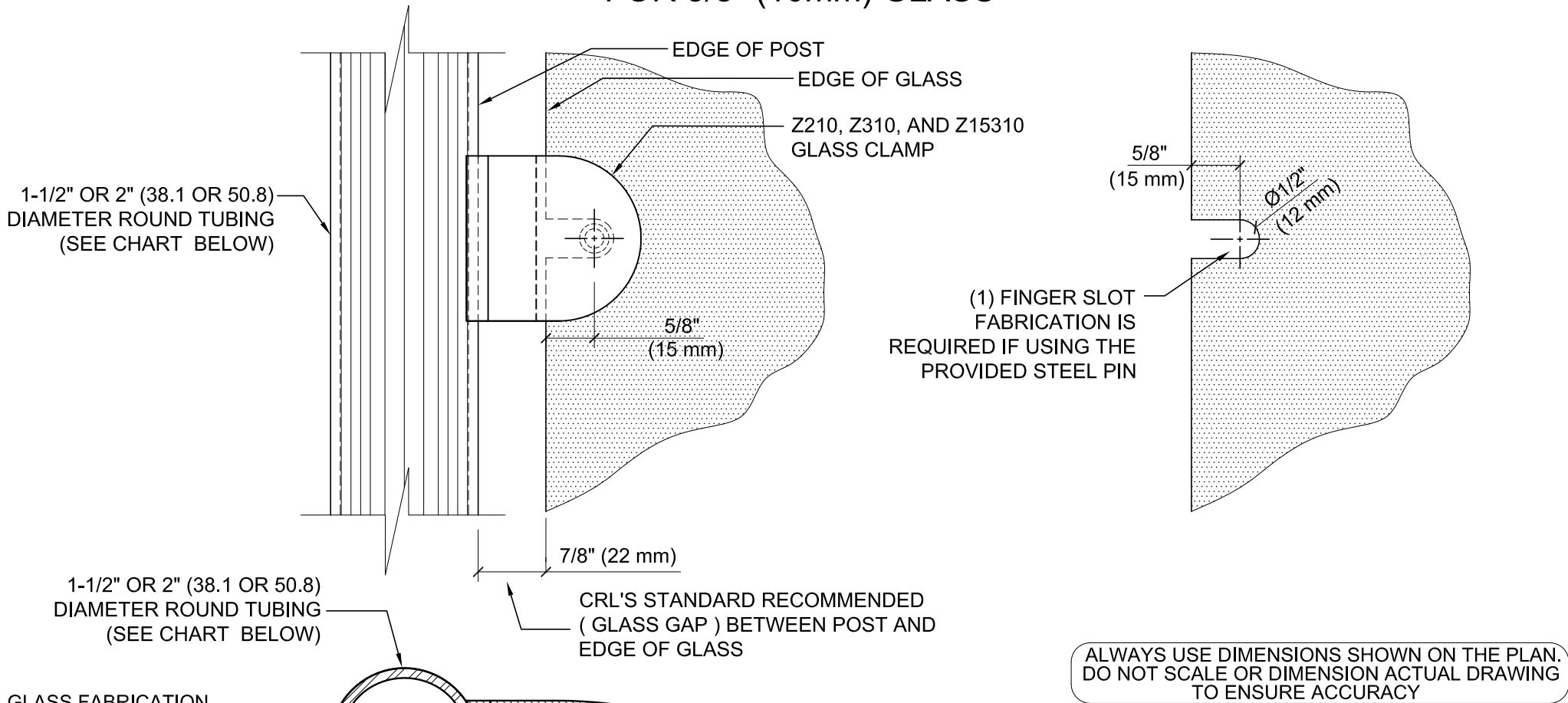


# GLASS FABRICATION TEMPLATE FOR THE Z-SERIES ROUND TYPE RADIUS BASE CLAMPS FOR 3/8" (10mm) GLASS



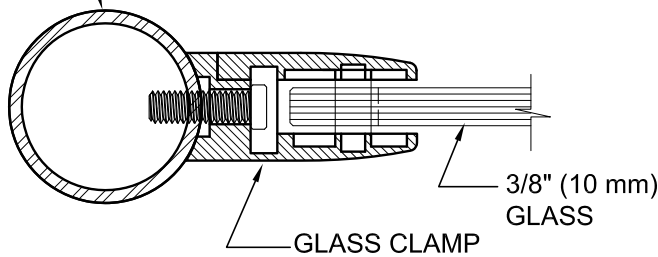
1-1/2" OR 2" (38.1 OR 50.8)  
DIAMETER ROUND TUBING  
(SEE CHART BELOW)

1-1/2" OR 2" (38.1 OR 50.8)  
DIAMETER ROUND TUBING  
(SEE CHART BELOW)

CRL'S STANDARD RECOMMENDED  
(GLASS GAP) BETWEEN POST AND  
EDGE OF GLASS

**GLASS FABRICATION  
TEMPLATE USED FOR:**

CATALOG NUMBER	TUBE DIA
Z210BR	2" (50.8mm)
Z210CH	2" (50.8mm)
Z210SC	2" (50.8mm)
Z210BN	2" (50.8mm)
Z210GP	2" (50.8mm)
Z210W	2" (50.8mm)
Z310BS	2" (50.8mm)
Z310PS	2" (50.8mm)
Z15310BS	1-1/2" (38.1mm)
Z15310PS	1-1/2" (38.1mm)



**SPECIFICATIONS:**

GLASS THICKNESS: MODELS FOR 3/8" (10 mm) GLASS.

BASE DESIGN: RADIUS BACK

FOR USE WITH: 1-1/2" OR 2" (38.1 OR 50.8 mm) DIAMETER ROUND TUBING (SEE CHART)

MATERIAL: CHOICE OF ZINC CONSTRUCTED OR STAINLESS STEEL. STAINLESS STEEL OR POWDER PAINTED ZINC CLAMPS ARE RECOMMENDED FOR MORE DURABILITY IN EXTERIOR APPLICATIONS.

GLASS FABRICATION: FOR 3/8" (10 mm) THICK GLASS. 1/2" (12mm) DIAMETER FINGER SLOT REQUIRED IF USING PROVIDED STEEL PIN FOR GLASS SUPPORT

INCLUDES: RUBBER GASKETS AND STEEL PIN (FOR OPTIONAL USE) WITH GROMMET.



ARCHITECTURAL PRODUCTS  
PH: 800-421-6144 FX: 800-262-3299  
WWW.CRLAURENCE.COM

**DESCRIPTION:**

Z-SERIES ROUND TYPE RADIUS BASE GLASS CLAMP

FOR 3/8" (10mm) THICK GLASS

CAT. NO:	(SEE CHART)	DATE:	10/21/09
FILE NAME:	Z210-GlsFab REV	SCALE:	N.T.S.
DRAWN BY:	R.A.	CHECKED BY:	C.H.
			SHT <u>1</u> OF <u>1</u>